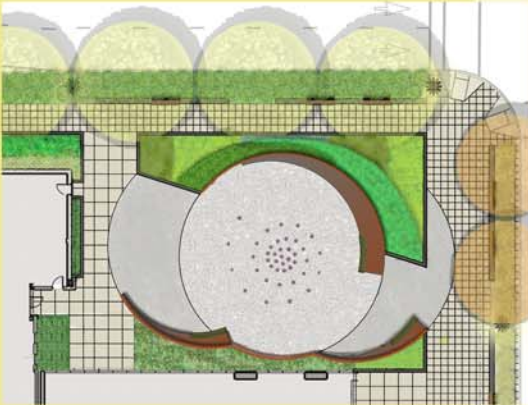
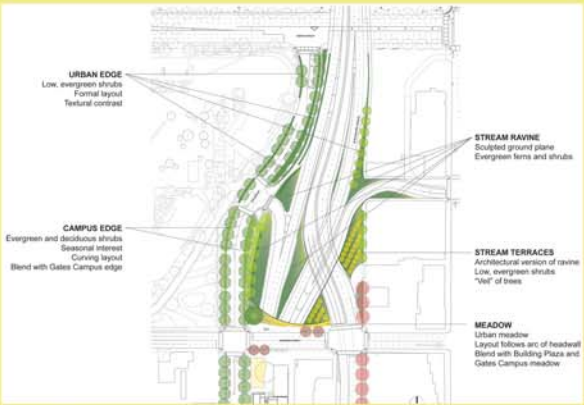


URBAN GATEWAYS

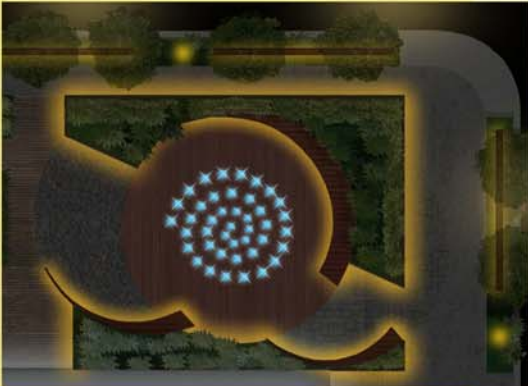
NORTH PORTAL, SR99 TUNNEL



THIS GATEWAY SITS AT THE NORTHERN END OF THE CITY CENTER, HIGHLIGHTING THE ARRIVAL DOWNTOWN FROM THE NORTH. THE STRONG FEATURES OF THE RAMPS AND NORTH PORTAL WALL ARE EMPHASIZED WITH PLANT MATERIAL FROM THE RIVERS AND STREAMS OF WASHINGTON. HARRISON STREET PROVIDES A SLOWER, PEDESTRIAN SCALE EXPERIENCE. A SMALL PLAZA ABOVE THE PORTAL PROVIDES VIEW OPPORTUNITIES NORTH TO LAKE UNION, WHILE A LARGER PLAZA SITS ADJACENT TO THE OPERATIONS BUILDING. SITTING DIRECTLY ABOVE THE TUNNEL, THE NORTH OPERATIONS BUILDING SERVES AS A PROMINENT BEACON WITH THE BOLD "SAFETY YELLOW" VENTILATION STACKS.



CORTEN STEEL AND EXPOSED AGGREGATE EXPRESS THE INDUSTRIAL NATURE OF THE TUNNELING PROCESS, WHILE PLANTINGS AND WOODEN BENCHES CREATE AN **INVITING PEDESTRIAN SPACE**.



INSPIRATION FOR THE **CIRCULAR FORMS** OF THE NORTH OPERATIONS BUILDING PLAZA WAS DERIVED FROM THE **TUNNEL DIRECTLY BELOW**. THE CURVED BENCHES AND LIGHTS ECHO THE BLADE LIKE MOVEMENT CREATED BY THE TUNNEL BORING MACHINE.



SR 99 TUNNEL PROJECT
ANTICIPATED CONSTRUCTION 2012-2015

URBAN DESIGN TEAM:

SEATTLE TUNNEL PARTNERS/
HNTB CORPORATION

WASHINGTON STATE
DEPARTMENT OF
TRANSPORTATION

WEINSTEIN AJU

CITY OF SEATTLE DEPARTMENT
OF TRANSPORTATION