

# SR 520 Multimodal Corridor

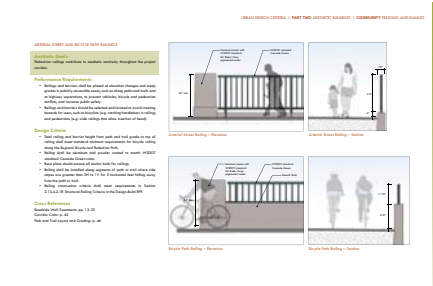
## PROJECT GOALS

Improve the capacity to move people and goods in the SR 520 corridor using multimodal and sustainable strategies to enhance safety, efficiency and comfort for all users.



1

Seattle Community Design Process involves communities and agencies in non-motorized planning for safe, connected, and comfortable places



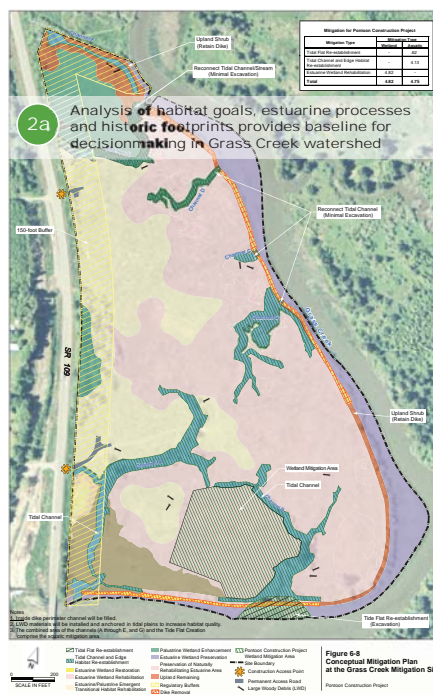
1a Design guidelines provide framework for developing local and regional trails



1b Design and implementation creates healthy stream habitat and human access to nearby nature



1c Points Loops Trail, a favorite community pedestrian path, with major improvements



2 Grass Creek mitigation site restores historic estuary function and reconnects critical fish habitat



2b Innovative construction methods protect fragile ecological and archaeological resources



2c Diverse native plantings are monitored for 10 years to ensure success and lessons learned



2d Biodegradable erosion control provides "scaffold" for new plants to establish in saline conditions

## PROJECT GOALS

Restore ecological function through interdisciplinary design leadership in a complex estuarine environment.

# Parametrix

ENGINEERING • PLANNING • ENVIRONMENTAL SCIENCES



The Landscape Architecture Professional Advisory Council (PAC)

OUT/in/FRONT  
landscape leading